

**50 DAYS LEFT !!
ARE YOU STILL WASTING YOUR
TIME ON USELESS SCROLLING ?**



Admission

Closing **ALERT**

@ Rs. 1599

USE CODE Y659

Offer Valid till
5th June 12 PM

BILINGUAL

A

सफलता 2025

Complete Foundation Batch

FOR RRB | PRELIMS + MAINS

PRE + MAINS + INTERVIEW



BILINGUAL

A

AAGAZ 2025

Complete Foundation Batch

BANK EXAMS | PRE + MAINS | IBPS, RRB



Section Summary

Misspelt Words:

Word Interchange

Sentence Rearrangement

Words usage

Error detection

Column Based

Para jumble

RC



Click to edit Master text styles

Misspelt Words:



Q1. In a press **breifing**, (A) / the Union ministry of health and family welfare on Wednesday **shared** (B) / a list of 13 states and Union territories along with the share of doses **administered** (C) / in private **facilities** (D). / **All correct** (E)

- ✓ A) **Breifing** → *Briefing*
- B) **Shared**
- C) **Administrated**
- D) **Facilities**
- E) **All correct**





Q2. Congress is looking into (A) / last month's massive and dead (B) / power outages across Texas and questioning officials (C) / who oversee the state's (D) / energy industry and electric grid. All correct (E)

- A) Looking into
- B) Dead
- C) Officials
- D) State's
- E) All correct

Handwritten notes and diagrams explaining the word 'dead':
noun → adj → adv
adj: deadly
dead animals
He is dead
great nation (adj)
S.C. deadly



Q3.

This is an **extension (A)** / to the protest which took **place (B)** / in Pune last week, after Amazon India **introduced (C)** / a delivery free **region (D)** / for all delivery partners pan-India. **All correct (E)**

- A) Extension**
- B) Place**
- C) Introduced**
- D) Region**
- E) All correct**

regime - administration



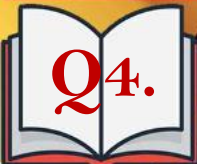
Click to edit Master text styles

Word Interchange



Directions(4-5): Identify the word which is **incorrectly used in the following sentence:**



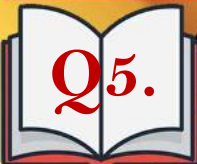


Q4. The scientist's groundbreaking theory was met with initial **skepticism (A)**, but gradually gained **traction (B)** as more **empirical (C)** evidence emerged to **compliment (D)** her findings.

- A. skepticism
- B. traction
- C. empirical
- D. compliment
- E. No error

doubt
attraction
Empirical - Practical not on theory
Pragmatic
युक्त Complement





The lawyer's eloquent (A) argument managed to sway (B) the jury, despite the overwhelming (C) evident (D) presented by the prosecution.

- A. eloquent
- B. sway
- C. overwhelming
- D. evident ✓
- E. No error

Evidence
Noun - Adj - Adv
Proof Evident -
Evidently
Verb



Click to edit Master text styles

Sentence Rearrangement



Directions (6-8): Two sentences are given below with four words highlighted which may or may not be arranged meaningfully. So you have to identify the proper sequence of words between two sentences to make given sentences meaningfully correct.



Q6.

With regard to the world and worldly life, we are mostly driven by survival (A) desires and natural (B) instincts to ensure our selfish (C) and success, which we measure by how much we are appreciated (D), accepted, approved or criticized.

a) A-C ✓

b) B-D

c) A-B

d) Both C-D and A-B

e) The sentence is correct

Selfish and success
(-ve) (+ve)

blue and black
tall and handsome



Q7.

After signing the loan agreement, C. S. Mohapatra said **disturbances (A)** of overhead distribution lines into underground cables would help build an energy-efficient distribution network, **reduce (B)** technical and commercial losses and **minimize (C)** electricity outage resulting from natural hazards such as cyclones and external ~~conversion~~ (D) to overhead lines.

- a) A-B
- b) Both C-D and B-A
- c) **A-D** ✓
- d) Both B-C and A-D
- e) All are correct.

disturbances

*CT
RC
PT*



Q8.

The college ^{S₁} brainstormed (A) and teachers ^{S₂} administration (B) to recreate the laboratory applications (C) for the students on the digital platform. In some cases, software ambience (D) were made available and used by the faculty.

- a) A-B
- b) B-D
- c) Both A-B and C-D
- d) Both B-D and A-C.
- e) The sentence is correct

The teachers and the students

↳ going

The teachers & aid and they



Click to edit Master text styles

word usage



Directions (9-10): Given below is a word followed by three sentences. You need to understand whether the sentences used the highlighted word correctly or not. Mark the incorrect sentence with the incorrect word usage as your answer.



Q9.

Delight - Excite, Enhance,

- a. The playing style of Messi is so **delightful** to watch. *adj / n*
- b. I was so **delighted** to see my older brother after so many years. *verb*
- c. It is **delightful** to introduce you to my mom after so many years.
- d. He was **delighted** to see an increment in his salary. *+ve*

- A) Only a
B) Only b
C) Only c
D) Only d
E) All are correct ✓



Q10

Defy

Refuse / Deify - Worship Deity

(I) Unnamed people in Cachar district booked for seeking a social boycott of two men for **defying** their calls against working for the BJP during repolling in the Sonai assembly constituency on April 20

(II) The traders demanded to allow the opening of their shops and they also threatened to open them **defying** the state orders if not allowed officially.

(III) Mamata Banerjee's remarks are in context of several right-wing Hindu organizations trying to **defy** Nathuram Godse.

- A) Both (i) and (ii)
- B) Only (iii) ✓
- C) Both (ii) and (iii)
- D) Only (ii)
- E) None of these

Deify



Click to edit Master text styles

Error detection



Directions (11-14): In the question below, a sentence is divided into four parts out of which one part has an error in it. Find the part with error and mark that as your answer.

Double Error



Q11

Even though more than a quarter-century has elapsed since **(A)** / the Constitution **were** *was* amended to make urban and rural local bodies **(B)** / a self contained third tiers of governance, it is often **(C)** / agreed by experts that there is inadequate devolution of powers to them **(D)** / No Error **(E)**.

*has does
eats*



*1 -> Sr. mgmt
2 -> Jr. mgmt
3 -> faculties*

- A. Only A&B**
- C. Only A&D**

- B. Only C**
 - D. Only D**
 - E. No error**
- Add 247 runs three tiers*

Q12

The mass exodus of migrant labourers in foot ^{on} and the subsequent **(A)**/ running of Shramik Express trains by the Ministry of Railways in the middle of the COVID19 lockdown **(B)**/ and the logistical challenge in dealing with China figured as a recurring theme as the Lok Sabha **(C)**/ took up the debate on demand of grants from the Railways **(D)**/ No Error **(E)**. _{of}

- A. Only A&B B. Only B ✓**
C. Only A&D D. Only D E. No error



Q13

The judgment echoes the arguments that child rights activists ^{have} has been (A) / making for year by ignoring the natural sexual tendencies (B) / of adolescents, POCSO can ^{years} and does became tool for the persecution (C) / of young people in consenting sexual relations (D) / No Error (E).

A. Only A&B

B. Only B

C. Only C&D ✓

D. Only D

E. No error



Q14

The Centre has informed a parliamentary panel **A)** that a standalone project to build a **(B)** critical road along the border with **(C)** China in Ladakh is going on **(D)**/No Error.

A. Only A&B

B. Only B

C. Only C&D

D. Only D

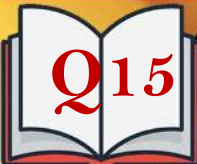
E. No error ✓



Click to edit Master text styles

Column Based





Column I

Column II

A) The uncertainty around cryptocurrencies in India is a

B) In February 2021, RBI Governor Shaktikanta Das said the central bank has *had*

C) In May 2021, the National Payments Corporation of India

D) reservations about crypto currencies and is working on its own digital currency.

E) rejected a proposal for a ban on crypto currency transactions.

F) result of conflicting statements by government and RBI.

A) AF

B) BE

C) CF

~~D) BF~~

E) Both a and c



Q16

Column I

Column II

A) Uttar Pradesh has become the first state of the country to provide

B) CM Yogi launched a free vaccination campaign in the state to provide

C) The special vaccination campaign launched under Mission June'

D) name is getting tremendous success across the state.

E) vaccines against COVID-19 to the people aged between 18 to 45 years.

F) the fastest and highest number of vaccinations to the youth.

A) AD

B) CF

✓ C) BE

D) Both B and C

E) All a, b, c.



Directions (17): Choose the option which when used to start a sentence combines both the given sentence into a meaningful single sentence without changing meaning.



Q17

Gupta criticized some of the proposals. On the proposal to hold national elections once a transitional peace government has been ^{-ve} established in Afghanistan, Gupta pointed out that “this is anathema to the Taliban who see elections as a kind of Western toxification”.

(I) due to this

[reason]

(II) As long as

[time]

(III) Citing the report

→ Proof -ve

A) Only (II)

B) Only (III)

C) Both (I) and (II)

D) Only (I)

E) None of these



Click to edit Master text styles

Para jumble



Directions (18): Rearrange the paragraph and answer the following questions. One sentence is odd one out.



- A.** When sleeping at the edge of a group, mallards keep one cerebral hemisphere awake and the corresponding eye open and directed away from the other birds, toward a potential threat.
- B.** Based on these findings and the fact that dolphins can swim while sleeping unihemispherically, it is commonly assumed that birds also rely on this sort of autopilot to navigate and maintain aerodynamic control during flight.
- C.** How might a bird sleep in flight without colliding with obstacles or falling from the sky?
- D.** However, it is also possible that birds evolved a way to cheat on sleep.
- E.** One solution would be to only switch off half of the brain at a time, as Rattenborg showed in mallard ducks sleeping in a dangerous situation on land.



Q18

What is the correct order of the paragraph after rearrangement?

- A. DBAEC**
- B. AECDB**
- C. CEABD**
- D. BADEC**
- E. ABCDE**



- A.** What is a Biocentric ethics to specific? *Que*
- B.** Biocentric ethics calls for a rethinking of the relationship between humans and nature. *Ans*
- C.** It states that nature does not exist simply to be used or consumed by humans, but that humans are simply one species among many.
- D.** It also states that, since we are part of an ecosystem, any action which negatively affects the living systems of which we are a part adversely affects us as well, whether or not we maintain a biocentric worldview.
- E.** Biocentrists believe that all species have inherent value, and that humans are not superior to other species in a moral or ethical sense.

A B C D E
A.
✓
meaning



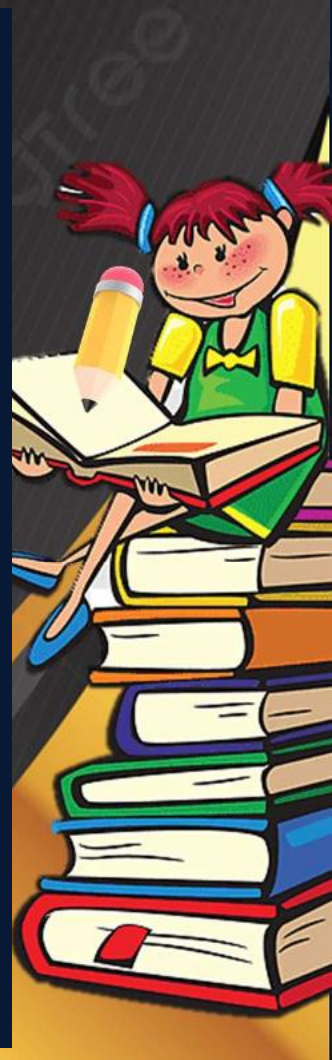
Q19

What is the correct order of the paragraph after rearrangement?

- A. DBAEC**
- B. AECDB**
- C. CEABD**
- D. BADEC**
- E. ABCDE**



- A.** A decade ago, in September 2007, the Whitechapel Gallery closed its doors for two years to expand and renovate its exhibition space.
- B.** While its physical walls were stripped bare, however, the gallery persisted in spirit by embarking on a unique collaborative programme to establish Artists' Film International, with partners in cities in 15 countries, from Kabul to Tromso to Buenos Aires.
- C.** The goal of this collective was to share and extend the craft of film as an artistic medium, and to bring challenging work from around the world to a gallery audience.
- D.** In years since, the resultant short films, each suggested by one or other of the partner organisations, have been a fixture in the gallery's programme, like vivid messages in a bottle washing up on Whitechapel Road.
- E.** The films that have been featured – each year has a theme and a pair of films is shown each month – could hardly have been more diverse, but they share an invitation for a certain kind of looking.



Q20

What is the correct order of the paragraph after rearrangement?

- A. DBAEC**
- B. AECDB**
- C. CEABD**
- D. BADEC**
- E. ABCDE**



Click to edit Master text styles

Reading Comprehension



21. What is the most appropriate tone of the passage?
22. What is the main intention of the author in writing this passage?
23. Which of the following is an inference that can be drawn from the passage?
24. Which of the following inferences is most strongly supported by the passage?
25. Based on the passage, it can be inferred that:
26. Which of the following facts is directly stated in the passage?
27. Which of the following is also stated as a fact in the passage?
28. According to the passage, which of the following occurred after Elira's disappearance?
29. Which of the following is the closest synonym of the word "prodigy" as used in the passage?
30. Which of the following is the antonym of the word "sanctioned" as used in the passage?

In the heart of the Aelorian Empire, nestled between glistening sapphire lakes and thick cedar forests, lay the ancient city of Virellia. Once a humble trading post, it had transformed into the empire's center for arcane knowledge, diplomacy, and innovation. Scholars from distant lands sailed across perilous seas just to study in its grand libraries and observe the work of the mystical Engineers of Light — a guild that merged magic with machinery.

Among these engineers was Elira, a prodigy known not just for her intellect but for her controversial designs that challenged the old rules. While most engineers relied on the sanctioned Luminar Crystals for power, Elira ventured into forbidden territory — experimenting with Echo Shards, remnants of the Great Silence, a catastrophic magical blackout from a century ago. Her work, though promising, attracted scrutiny from the High Council.

When whispers of instability in the eastern provinces grew louder, many suspected a connection between the reactivated Echo Shards and the erratic weather, sudden power surges, and even the disturbing appearance of Memory Phantoms — ghostly entities believed to be fragments of lost consciousness from the Silence. Elira denied the link, attributing the anomalies to natural cycles and regional unrest, but even her closest allies began to waver.

One stormy evening, Virellia experienced an event unseen in generations — the stars vanished from the sky. Panic spread as the city's energy grid flickered, and strange visions began tormenting the populace. Elira, under house arrest by now, managed to transmit one final message through her prototype device: "Not the Shards. The cause lies beneath the Archives." The message abruptly ended, and she was never seen again. In the aftermath, the Council sealed the Archives, and discussions of the Echo Shards were banned. But decades later, a new generation of engineers began unearthing Elira's journals, and whispers of a different truth — one buried, quite literally, beneath the revered city — began to rise once more.

Q21

What is the most appropriate tone of the passage?

- ~~A. Humorous~~
- ~~B. Ironic~~
- C. Suspenseful** ✓
- ~~D. Didactic~~
- ~~E. Indifferent~~



Q22

What is the main intention of the author in writing this passage?

- A. To narrate the mysterious events surrounding a forbidden technology ✓
- B. To explore the political dynamics of ancient empires
- C. To portray a utopian city thriving on magical energy
- D. To warn against the dangers of over-reliance on scholars
- E. To romanticize ancient academic traditions



Q23

Which of the following is an inference that can be drawn from the passage?

- A. The Council was aware of the truth behind the disturbances. ✗
- B. Elira's disappearance was orchestrated by the Engineers of Light. ✗
- C. The Memory Phantoms were creations of the Echo Shards. ✗
- D. The Archives may contain knowledge that contradicts the official narrative. ✓
- E. The Luminar Crystals were the original cause of the Great Silence. ✗



Q24

Which of the following inferences is most strongly supported by the passage?

- A. Virellia's decline began only after Elira vanished.
- B. The High Council acted solely out of jealousy.
- C. The city's power systems were entirely magical.
- D. The Memory Phantoms directly attacked citizens.
- E. Elira's theories were eventually validated by future engineers.



Q25

Based on the passage, it can be inferred that:

- A. Elira was trying to create a new form of sentient life.
- B. The Echo Shards were never used by anyone before Elira.
- C. The High Council's actions were driven by fear of past disasters.
- D. The Engineers of Light were unanimously opposed to Elira.
- E. Natural disasters had long plagued the Aelorian Empire.



Q26

Which of the following facts is directly stated in the passage?

- A. Elira was eventually exonerated.
- B. Virellia had one of the largest trade networks in the empire.
- C. The stars vanished during a stormy night in Virellia.
- D. The Echo Shards were originally created by Elira.
- E. Memory Phantoms caused the energy grid to fail.



Q27

Which of the following is also stated as a fact in the passage?

- A. The High Council sent Elira into exile.
- B. Elira's message claimed that the Shards were faulty.
- C. Virellia's scholars ignored warnings from the eastern provinces.
- D. Discussions of the Echo Shards were eventually banned.
- E. The storm was summoned by the engineers' devices.



Q28

According to the passage, which of the following occurred after Elira's disappearance?

- A. Memory Phantoms ceased appearing altogether.
- B. A rebellion started in the eastern provinces.
- C. The city of Virellia was abandoned.
- D. The Luminar Crystals were declared illegal.
- E. The Archives were sealed off by the High Council.



Q29

Which of the following is the closest synonym of the word “prodigy” as used in the passage?

- A. Genius
- B. Visionary
- C. Trainee
- D. Assistant
- E. Novice



Q30

Which of the following is the antonym of the word “sanctioned” as used in the passage?

- A. Advanced**
- B. Forbidden**
- C. Forged**
- D. Overlooked**
- E. Activated**



Directions (31): Replace the bolded phrase with the most appropriate option, if necessary. If no correction is required, select **Option E.**



Q31

The committee **found the report thoroughly and satisfactory**, prompting immediate policy revisions.

- A. found the report thorough and satisfactory
- B. found the report thoroughly and satisfactorily
- C. found the report thorough and satisfactorily
- D. found the report thoroughly and satisfied
- E. No correction required





1st Attempt =

BEST SHOT AT SELECTION

Prep Smart. Aim High. Crack It Once.

• Start Now! •

Flat **79%** Off



2X VALIDITY



3 Months
Extra Validity

USE CODE **Y659**

BUY NOW ON **ADDA247 APP**



Kinjal Gadhavi English Adda247
Telegram Channel

Bilingual 

BANK OF BARODA

Office Assistant 2025



Starts: 14 May, 25 | 11 am -7 pm

BANK OF BARODA 2025

OFFICE ASSISTANT BATCH

PRICE
₹ 4,541

OFFER PRICE
₹ 999

USE CODE **Y659**

FOR ENQUIRY CALL ON : 9691659561

USE CODE Y659 FOR MAXIMUM DISCOUNT

Adda247

BILINGUAL

A

सफलता 2025

Complete Foundation Batch

FOR RRB | PRELIMS + MAINS

PRE + MAINS + INTERVIEW



Starts: 29 Apr, 25 | 10 am - 7 pm

Bilingual

A



BANK OF BARODA

Office Assistant 2025



Starts: 14 Mar, 25 | 11 am - 7 pm

AMBITION

A

ENGLISH FOUNDATION BATCH

FOR 2025 BANK EXAMS

IBPS SBI RRB



Starts: 22 Mar | 1:30 pm - 2:30 pm



USE CODE **Y659** FOR MAXIMUM DISCOUNT

UNLOCK YOUR **RRB DREAMS!**
सफलता 2025
COMPLETE FOUNDATION BATCH
PRELIMS + MAINS
200+ HRS Live Classes | Handwritten Notes | PDFs
Join Now!

Best Seller



TEST PRIME

₹ 399.60 ₹ 999 (60% off)

Find Product By Exam



Bank Maha Pack



SBI Clerk



SBI PO



VIEW ALL

Browse By Product



Mock Test



Live Classes



Home



Community



My Content



Test Prime



Store

Triple Validity
BANK MAHAPACK
for all Bank & Insurance Exams
Selection Ka Saathi

Hinglish MAHAPACK

Bank Maha Pack for IBPS, RRB & SBI Exams

12k+ Mock Tests | 14k+ Videos | 6k+ Ebooks

₹ 2873.85 ₹ 12495 (77% off)

Sale is Live

Triple Validity
BANK MAHAPACK SELECTION BOX 2.0
With English Book Kit
Personalized Selection Box
Selection ka Saathi

Hinglish With Books

Bank Maha Pack Selection Box 2.0 With English Book Kit

10k+ Mock Tests | 12k+ Videos | 4k+ Ebooks
6 Books

₹ 4023.85 ₹ 17495 (77% off)

Sale is Live

Triple Validity
BANK MAHAPACK SELECTION BOX
With Hindi Book Kit
Personalized Selection Box
Selection ka Saathi

Hinglish With Books

Bank Mahapack Selection Box Hindi Book Kit

12k+ Mock Tests | 13k+ Videos | 6k+ Ebooks
6 Books

₹ 5173.85 ₹ 22495 (77% off)

Sale is Live

Triple Validity
BANK MAHAPACK PLUS
For IBPS, SBI, RRB GRADE B, NABARD GRADE A, IRDAI & many more
Selection Ka Saathi

Hinglish MAHAPACK

Bank Maha Pack Plus For IBPS, SBI, RBI Grade B, SEBI Grade A, ...

15k+ Mock Tests | 29k+ Videos | 6k+ Ebooks

₹ 5173.85 ₹ 22495 (77% off)

MAHAPACK
for all Bank Insurance Exams
Selection Ka Saathi
Hinglish
Sale is Live

Bank Maha Pack for IBPS, RRB & SBI Exams

Exams Covered: 12 MAHAPACK

Offers & Discounts



"Y659" coupon applied



Use Coins: 1249.50



For Admission Enquiry

CALL NOW



Select Validity

3 x 4 Months

What will you get



Access to Structured Classes in Live & Recorded

₹ 2499

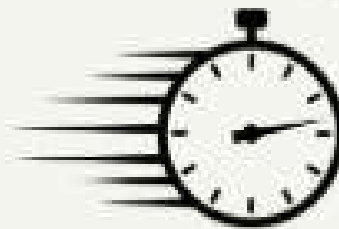
More Offers

₹ 12495 (80% off)

BUY NOW →



Vo  ulary



3PM!

Click to edit Master text styles

ANSWER KEY

1. a	2. b	3. d	4. d	5. d	6. a	7. c	8. c
9. e	10. b	11. c	12. b	13. c	14. e	15. a	16. c
17. b	18. c	19. e	20. e	21. c	22. a	23. d	24. e
25. c	26. c	27. d	28. e	29. a	30. b	31. a	

